

SKS Foundation

Striving for a Sustainable Change



SKS

The Genesis

Bharatkhalī village, located on the western bank of the Jamuna River in Gaibandha, was the home of the helpless in the remote char. To protect them against injustice, some young people organized themselves and started social work. The youths formed the Hat Bharatkhalī Social Welfare Society on 1st December 1987 to give a structure to people's participation. The Hat Bharatkhalī Welfare Society has evolved into a development organization-SKS Foundation.

The Organization Today

SKS Foundation is a national non-government organization rooted in Northern Bangladesh. SKS facilitates multi-faceted development programs covering the poor & marginalized focusing on women & children fighting against deprivation and injustice. It has grown more visibly over the last decades with diversity in its mission targeting the deserving people. Thus, SKS has been *Striving for a Sustainable Change* in collaboration with the development partners and stakeholders.

Vision

A poverty-free society where everyone has access to resources and lives with voice, dignity and justice.

Mission Statement

SKS Foundation facilitates the improvement of life and livelihood of the poor and excluded by reducing their vulnerabilities, promoting empowerment and improving access to development opportunities and resources.

SKS Foundation collaborates with the government including local government, the private sector, NGO networks and donors to ensure sustainable development.





Core Features

Hard-to-Reach Priority: SKS Foundation is recognized for its unwavering commitment to supporting the excluded & hard-to-reach, including *char* dwellers, indigenous groups, ultra-poor, and other forms of marginalization.

Innovative Vision: SKS Foundation advances with a forward-thinking approach, committed to growth and diversity through timely actions and creative solutions.

Collaborative Environment: SKS Foundation places staff at the center of its initiatives and fosters a non-bureaucratic culture that promotes a positive working atmosphere for all staff, regardless of gender.

Brand Commitment: SKS Foundation is dedicated to upholding its brand identity and reputation in its self-governance, program operations in partnership, service delivery and resource management.

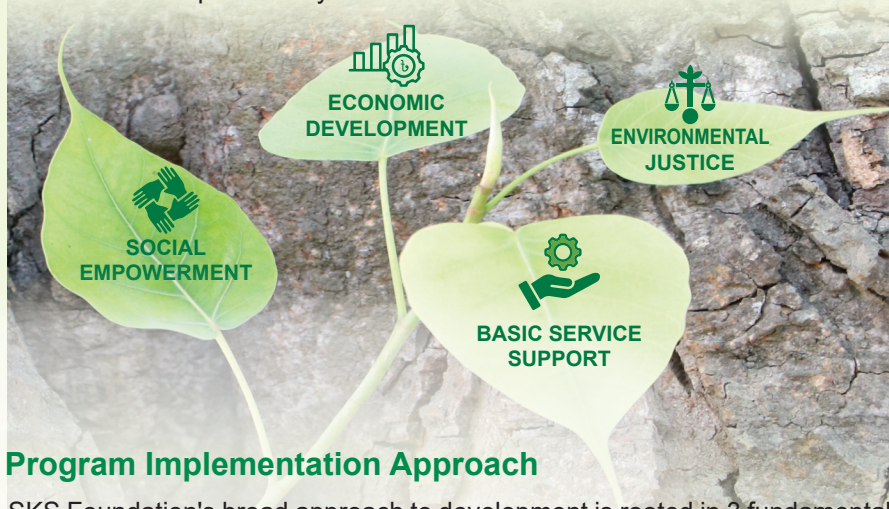
Sustainable Growth: SKS Foundation prioritizes progressive growth over revolutionary change, adopting an incremental program and organizational development strategy.

Adaptability & Responsiveness: SKS Foundation is flexible in responding to emerging needs & opportunities aligned with its mission and open to change, learning and interaction within the organization.

Holistic Development Approach: SKS Foundation is committed to comprehensive development, maintaining a programmatic focus encompassing social, economic, and environmental dimensions alongside social enterprising.

Mainstream Programs

SKS Foundation's development intervention integrates the service delivery operation with the rights-based approach. The development program structure has a well-rooted foundation of 4 mainstream program sectors namely Social Empowerment, Economic Development, Environmental Justice, and Basic Service Support. However, the program interventions under the sectors are complementary to each other.



Program Implementation Approach

SKS Foundation's broad approach to development is rooted in 3 fundamental aspects i.e. social, economic, and environmental while sustainability remains at the center. The approach is to bring people out of socio-economic and ecological poverty by building awareness, forging solidarity, providing access to resources, and empowering them to sustain their development. However, the overall approach is taken on the ground in an integrated fashion. Any particular intervention considers the deserving people, local context, economy of scale, operational convenience, and overall, the purpose of the intervention.

The Rights-based Approach: The purpose is to ensure a long-lasting impact by promoting development as a right rather than a charity.

Compact Work Approach: SKS remains committed to doing a compact job focusing its intervention avoiding spreading its resources thinly everywhere.

Household-based Approach: SKS is committed to ensuring holistic development focusing on households rather than the individuals.

Added Value Approach: SKS implements its programs with some added value that helps the organization to stand out in the NGO community.

Integrated Approach: SKS undertakes its programs in an integrated manner as resource partners are gradually focusing on integrated & multi-sectoral approaches.

Program Participants

The program intervention covers the marginalized poor, landless, marginal & small farmers and vulnerable groups. Particular focus is pin-pointed on the poor & hardcore poor, widows, divorcees & abandoned women, women-headed households, youth & adolescents, mothers & children, persons with disabilities, Indigenous groups, CBOs, etc.

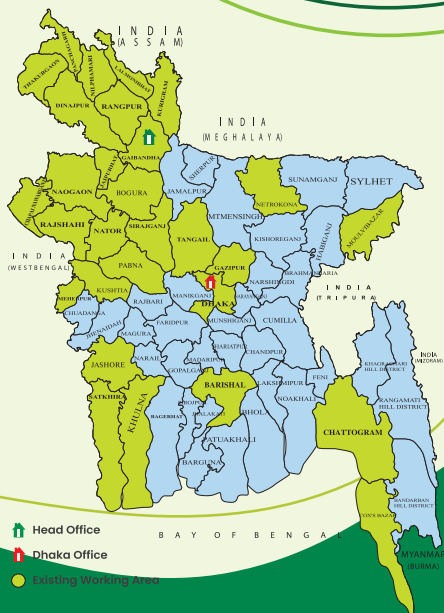
Type of Participants	Male	Female	Total
Development Program Participants	16,934	1,415,012	1,431,946
Microfinance Group Members	5,230	283,936	289,166
Adolescents			42,205
Children			29,437
Elderly people			8,500
Total			1,801,254



Intervention Areas

SKS Foundation works following multi-disciplinary and context-specific interventions covering the *char* area, drought zone, coastal belt, *haor* region & urban settings focusing the climate change & disaster-affected and hard-to-reach communities in 29 districts at present under all the divisions of Bangladesh.

Division	District	Upazila
Rangpur	8	56
Rajshahi	8	56
Dhaka	3	24
Khulna	5	17
Chattogram	2	12
Mymensingh	1	1
Barishal	1	2
Sylhet	1	1
	29	169



Programmatic Strategic Issues

Social Empowerment Sector:

1. Women Development & Gender Justice
2. Child Protection
3. Addressing Inclusivity
4. Peace & Harmony in Family & Community
5. Governance & Accountability



Economic Development sector:

1. Expansion of Microfinance Program
2. Technical & Vocational Education
3. Entrepreneurship Development

Environmental Justice Sector:

1. Environment Conservation
2. Climate Change & Adaptation
3. Disaster Risk Reduction

Basic Service Sector:

1. Quality Education
2. Promotion of Health
3. Promotion of WASH
4. Senior Citizen Care



Networking & Collaboration

SKS Foundation collaborates with policy-makers, government bodies, like-minded networks, professional alliances, civil society, national & international NGOs, LGIs, mass media, etc. Concerning this, SKS continues partnership & networking with the respective networks, organizations & groups covering the administrative tiers ranging from the national to the local levels. SKS performs advocacy & networking concerning human rights, legal aid, gender issues, environmental & climatic concerns, health, education, information rights, etc. Alongside, SKS upholds the spirit of promoting & preserving the socio-cultural rights of the respective community and ensuring a congenial atmosphere in the society. Concerning this, SKS maintains close collaboration with different cultural groups, youth clubs, educational institutions, local administrations & elected bodies, civil society and development partners.



Partners in Development

- Resource organizations/institutions
- Local government institutions
- National & international NGOs & CBOs
- Like-minded networks
- Private sector operators
- Civil society groups
- Cultural & theatre groups
- Mass media

Functional Structure

1. Social Empowerment
2. Economic Development
3. Finance and Accounts
4. Program Development & Resource Mobilization
5. Administration
6. Internal Audit & Monitoring
7. Advocacy & Communication
8. Human Resource Development
9. Gender, Child Protection & Safeguarding
10. Legal Support
11. Information Technology

Office Set-up & Staff Status

Development Program Office - 40

Microfinance Office - 249

Total Staff - 3,492

Male - 2,336 (67%)

Female - 1,156 (33%)

Governance & Policy Management

The 7-member Executive Committee of SKS Foundation determines the policy directions which is formed by the General Council. The Executive Committee provides SKS Foundation's strategic directions based on situation, context, and legal issues. The Executive Committee meets quarterly centering organizational policy and macro-planning issues while the General Committee meets annually to review & approve the yearly performance & work-plan, budget, and other strategic issues.



Chairperson
Murshed Alam Sarker
Executive Director
People's Oriented Program Implementation (POPI)



Vice-Chairperson
Mst. Parvin Akter
Lecturer
Fulchhari Government College



Treasurer
Dr. Anamika Shaha
Vice Principal
SKS School & College



Executive Member
Mst. Sharifa Khatun
Head Teacher
Itakuri Girl's High School



Executive Member
Md. Nasir Uddin Faruq
Deputy Chief Executive
Shushilan



Executive Member
Rafiqul Islam Sarker
Consultant
Development Sector



Member Secretary (Ex-officio)
Rasel Ahmed Liton
Founder & Chief Executive
SKS Foundation

For further details

Advocacy & Communication Department

SKS Foundation

Striving for a Sustainable Change

📍 **Head Office:**
College Road, Uttar Horin Singha,
Gaibandha-5700, Bangladesh
Tel : +88-02588877630, Fax: +88-02588877631
Cell: +880 1713 484430
📧 sksfoundation@sks-bd.org



📍 **Dhaka Office:**
SKS Bhaban, House # 2, Road # 16,
Sector # 3, Uttara, Dhaka - 1230
Tel : +88-0241091499
Cell : +880 1713 484485
📧 sksfoundation.bd@gmail.com

🌐 www.sks-bd.org 📺 [sksfoundation](https://www.youtube.com/sksfoundation) 📘 [sksfoundationbd](https://www.facebook.com/sksfoundationbd) 📷 [sks.foundation](https://www.instagram.com/sks.foundation)

Advisor: Rasel Ahmed Liton; Script: Joseph Halder; Design: Saha Dipak Kumar, Roknuzzaman; Photography: SKS Foundation
Printed by: SKS Printers

February 2025